

A WORLD OF STYLE

WHERE TO SEE IT, SHOP IT, LIVE IT!

16-PAGE
PULLOUT
GUIDE
**MEXICO
NOW!**

Condé Nast **Traveler**

TRUTH IN TRAVEL / OCTOBER 2010

India

The Splendors
of Jaipur

Italy

LOVE AT A
PERFUME COUNTER

Rio

BEACHES, BIKINIS,
AND MORE!

Morocco

MAGNIFICENT MARRAKECH

New York

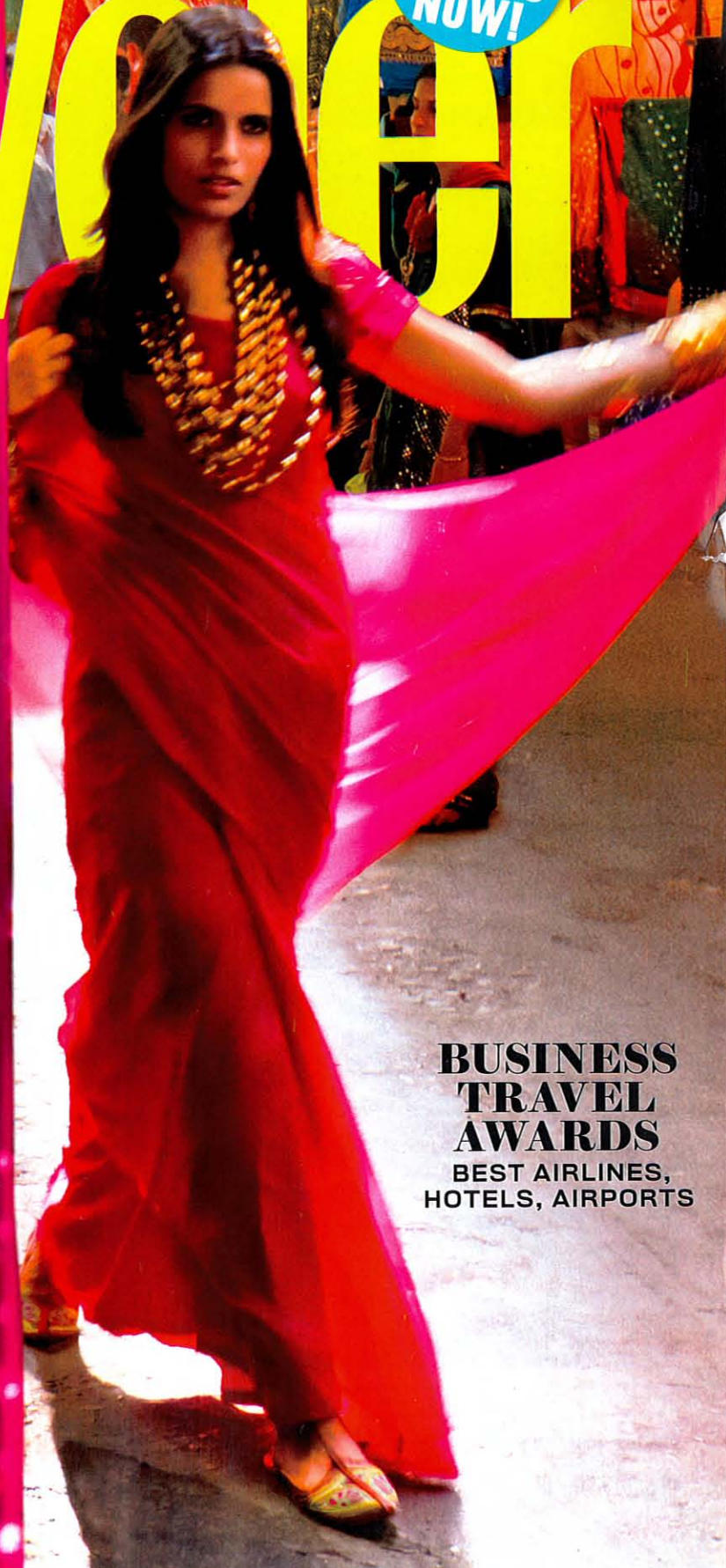
HOT SPOTS: AN INSIDERS' GUIDE

+265

FABULOUS HOTELS,
RESTAURANTS, GALLERIES, BARS,
AND SHOPS WORLDWIDE

**BUSINESS
TRAVEL
AWARDS**

BEST AIRLINES,
HOTELS, AIRPORTS



Condé Nast TRAVELER (cntraveler.com)

World Style • Jaipur • Marrakech • New York • Rio de Janeiro

October 2010

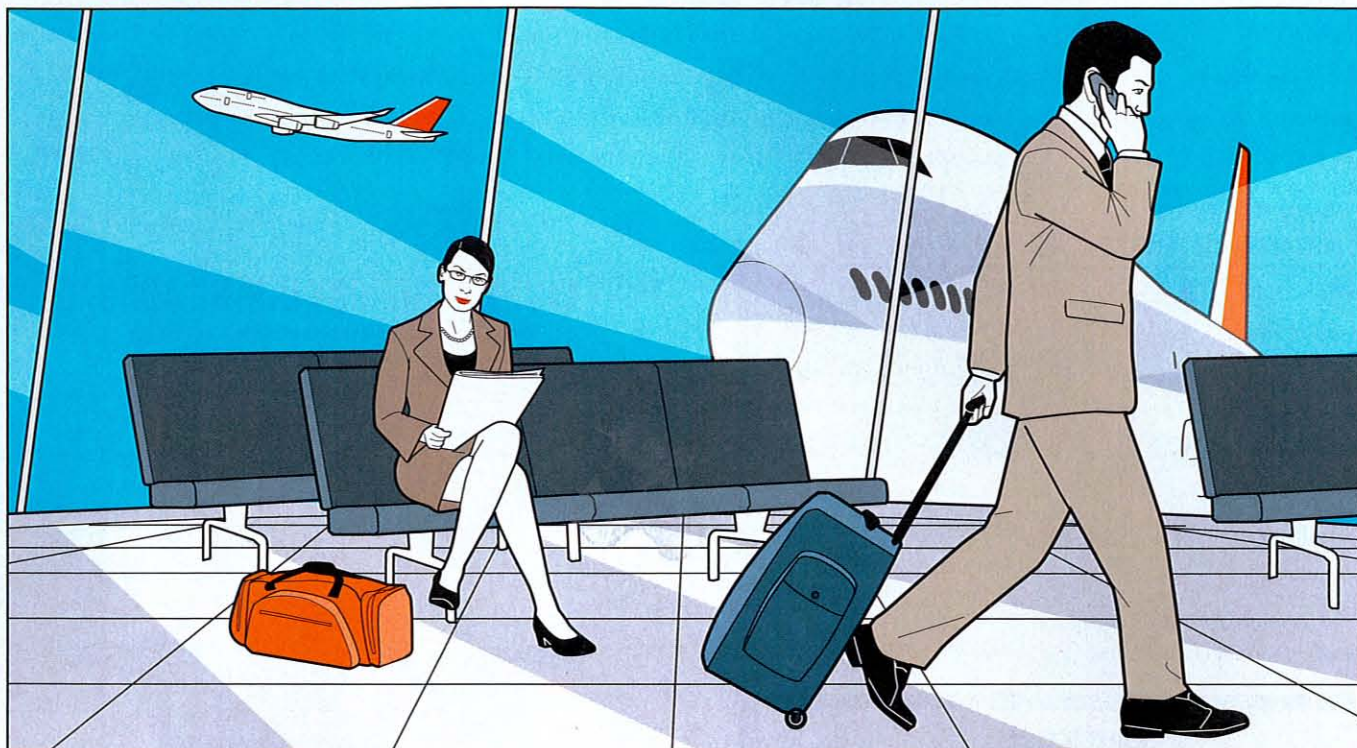
08434



The 13th Annual

BUSINESS TRAVEL AWARDS

THE ROAD WARRIORS ARE BACK, AND MORE DISCERNING THAN EVER, AS THEY RATE THEIR FAVORITE AIRLINES, HOTEL BRANDS, AND AIRPORTS. AND THE WINNERS ARE...



TOP HOTELS

TECH-CENTRIC PENINSULA HOTELS TAKES TOP HONORS, WHILE NEWCOMER MONTAGE HOTELS (WITH ITS THIRD PROPERTY OPENING JUST THIS WINTER) MUSCLES ITS WAY INTO THE TOP TEN

COMING CLEAN

PERCENTAGE OF BUSINESS TRAVELERS WHO REQUEST FRESH TOWELS DAILY DESPITE HOTELS' EFFORTS TO GO GREEN

48%

METHODOLOGY Two independent firms asked *Condé Nast Traveler* readers identified as business travelers to rate hotel chains, airports, and airlines excellent, very good, good, fair, or poor on a variety of criteria. Final scores (out of 100) represent the percentage of readers who rated a hotel chain, airport, or airline excellent or very good and are based on a required minimum number of responses. More than 25,900 surveys were completed, returned, and tabulated.

HOTEL BRANDS

| HOTEL BRANDS | ★ | ✿ | 👤 | 🏢 |
|--------------------------------|-------------|------|------|------|
| Peninsula Hotels | 94.6 | 97.2 | 97.2 | 88.7 |
| Four Seasons | 92.4 | 94.8 | 94.6 | 87.4 |
| Mandarin Oriental | 91.8 | 95.4 | 95.7 | 83.9 |
| Ritz-Carlton | 90.8 | 93.4 | 93.3 | 85.1 |
| St. Regis | 89.9 | 94.2 | 92.7 | 81.6 |
| Montage Hotels & Resorts | 89.5 | 98.5 | 94.0 | 73.7 |
| Orient-Express Hotels | 87.8 | 96.6 | 94.3 | 68.1 |
| Oberoi Hotels & Resorts | 87.2 | 91.5 | 91.2 | 77.4 |
| Shangri-La | 87.1 | 90.3 | 91.2 | 78.2 |
| Jumeirah | 86.5 | 89.8 | 86.2 | 83.4 |
| Rosewood Hotels & Resorts | 86.4 | 90.8 | 91.5 | 76.0 |
| Regent | 86.3 | 89.6 | 89.6 | 79.0 |
| Raffles Hotels & Resorts | 86.1 | 89.7 | 91.7 | 75.0 |
| Luxury Collection | 85.7 | 90.9 | 87.8 | 77.6 |
| Park Hyatt | 84.7 | 88.8 | 86.4 | 78.2 |
| Pan Pacific Hotels & Resorts | 84.6 | 90.2 | 86.2 | 76.5 |
| Langham Hotels International | 84.2 | 86.3 | 86.6 | 79.2 |
| Emirates Hotels & Resorts | 83.7 | 84.8 | 84.8 | 81.4 |
| Taj Hotels Resorts and Palaces | 83.6 | 85.5 | 89.0 | 75.4 |
| Fairmont Hotels & Resorts | 82.4 | 85.5 | 85.5 | 75.3 |
| Conrad Hotels & Resorts | 81.1 | 86.7 | 83.5 | 72.3 |
| Okura Hotels & Resorts | 80.8 | 84.2 | 86.0 | 71.7 |
| JW Marriott | 79.9 | 83.5 | 81.7 | 73.7 |
| Grand Hyatt | 79.5 | 83.1 | 80.3 | 74.6 |
| Leela Palaces, Hotels, Resorts | 79.5 | 87.0 | 81.5 | 69.8 |

★ Overall Score ✿ Rooms 👤 Service 🏢 Business Services/Facilities
Numbers in bold indicate the highest score for that criterion.